

ASPECT RATIOS

2.28 : 1

Panoramic widescreen
(this is an estimated set of resolutions as there are so many standards)

16:9

PAL Widescreen

4:3

PAL Standard

For simplicity all resolutions in square pixels and all frame rates 25fps.

HD

1440 X 630

1920 X 1080

1440 X 1080

SD

1024 X 450

1024 X 576

788 X 576

Web (Large)

500 X 219

500 X 294

500 X 384

Web (Medium)

480 X 210

480 X 282

480 X 369

Web (Low)

320 X 140

320 X 180

320 X 246

CHOOSING A CODEC

Quicktime is available on most platforms and is very similar on mac and PC so its generally safe to say that most programmes will have an export to quicktime feature (after effects, premiere, final cut pro definatley do)

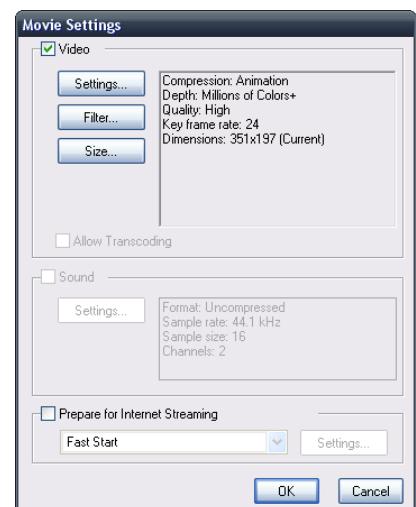
Archival quality (Editing, Making DVDs, authoring etc)

If you have loads of space on your hard dirve use the 'animation' codec, this is lossless (does not degrade the image quality) but produces huge files.

As an alternative I often use the 'Photo-Jpeg' or 'Motion-Jpeg' with the quality set high-ish. This does degrade the image a little but will produce very small files

FOR WEB

You should either use the 'Photo-Jpeg', 'Motion-Jpeg' or 'H.264' codec for web files. H.264 will take the longest to export but will produce the smallest files.



To change the codec click 'settings' in the quicktime export pannel